

MOKOLO CROCODILE WATER AUGMENTATION PROJECT PHASE 2

Abstraction works, Pumping stations, Reservoirs, Pipeline, related Multi-discipline works and Ancillary works.

Tender no: 054/2024/PMID/MCWAP2/RFB

Compulsory Briefing session

- 14 February 2024
- 10:00



Agenda

		Person
1.	Welcome and Purpose	Godfrey
2.	Attendance Register	Godfrey
3.	Introduction	Kgopotso
4.	Project Background & Location	Ntshavheni
5.	Project Estimated Timelines	Ntshavheni
6.	Bid Requirements	Lerato
7.	Project Scope of Work	
	<ul style="list-style-type: none"> - 7.1 Technical - 7.2 Environmental - 7.3 Social - 7.4 Health & Safety 	<ul style="list-style-type: none"> • Mlindi, Franz & Danie, • Deon • Thato • Mmoloki/Joep
8.	Bid Evaluation Process	Godfrey/Kamogelo
9.	Functionality	Godfrey <ul style="list-style-type: none"> • Lerato • Kamogelo
10.	Site Visit	Mlindi
11.	Q & A session	All
	Closing remarks	Godfrey





2. Attendance Register

Kindly provide the following in the chat box OR complete the attendance register:

- Name & Surname
- Company Name
- Email address
- Contact number

3. Introduction

3.1 Background on TCTA SPV Model

- **TCTA is a Special Purpose Vehicle**

- Acts on instruction from the Minister of Water and Sanitation to fund and implement off-budget raw water infrastructure on behalf of DWA
- Board is appointed by Minister of Water and Sanitation
- Established under the Water Act
- State-owned entity - Schedule 2 Public Entity ito PFMA

- **Project finance approach**

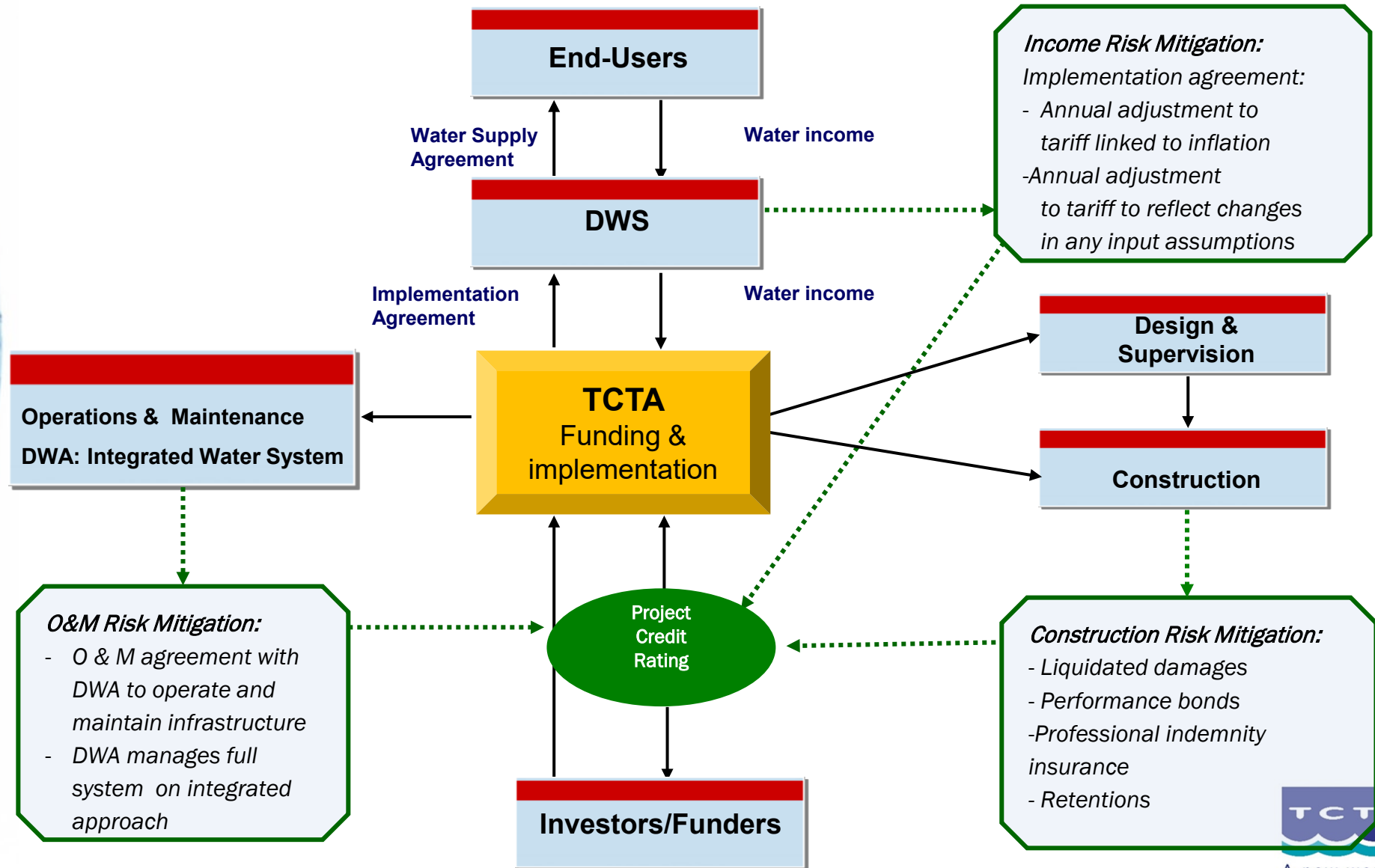
- No balance sheet
- Break-even of revenue to costs over a specified period
- Fully debt funded – no equity
- Ring-fence projects – tariffs related to a specific project – no cross-application of revenue

- **Non-profit-taking organisation**

- Recover actual costs – overhead and capex, no profit/loss or reserves
- Risk adverse approach - transfer risks to parties and sectors best suited to manage it
- Revenue stream terminates once debt is repaid on a project

- **Tariffs are TCTA's only source of revenue to repay debt on a project**

3.2 TCTA Project Structure





3.3 MCWAP-2A Project Status

- **PROJECT FULLY FUNDED**
 - 88% PRIVATE, 12% FISCUS
- **PROFESSIONAL SERVICE PROVIDERS**
 - GIBB BIGEN NYELETI JOINT VENTURE (GBN-JV)-DESIGN AND CONSTRUCTION SUPERVISION
- **AUTHORISATIONS**
 - Environmental Authorisation (EA)
 - 30 Borrowpits Authorisation
 - Land and Acquired-Expropriation
 - Way Leaves Obtained
 - Various Engineering and Environmental Studies completed
 - Water Use License for users
- **OUTSTANDING**
 - Water Use License for project
 - Some minor way leave agreements
- **CONTRACTING**
 - FIDIC Red Book, Yellow Book for Mechanical and Electrical
 - No other contracting method



3.4 Water Users



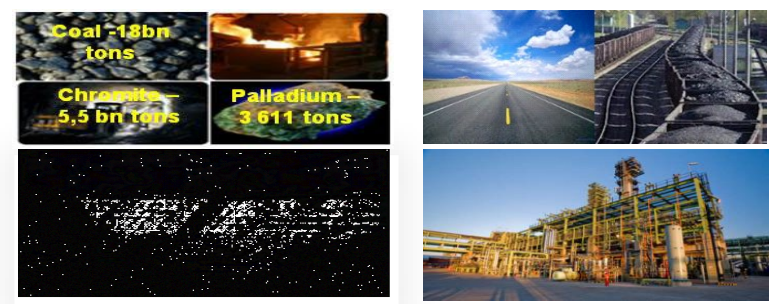
Exxaro



ESKOM



Lephalale Municipality



INDUSTRY



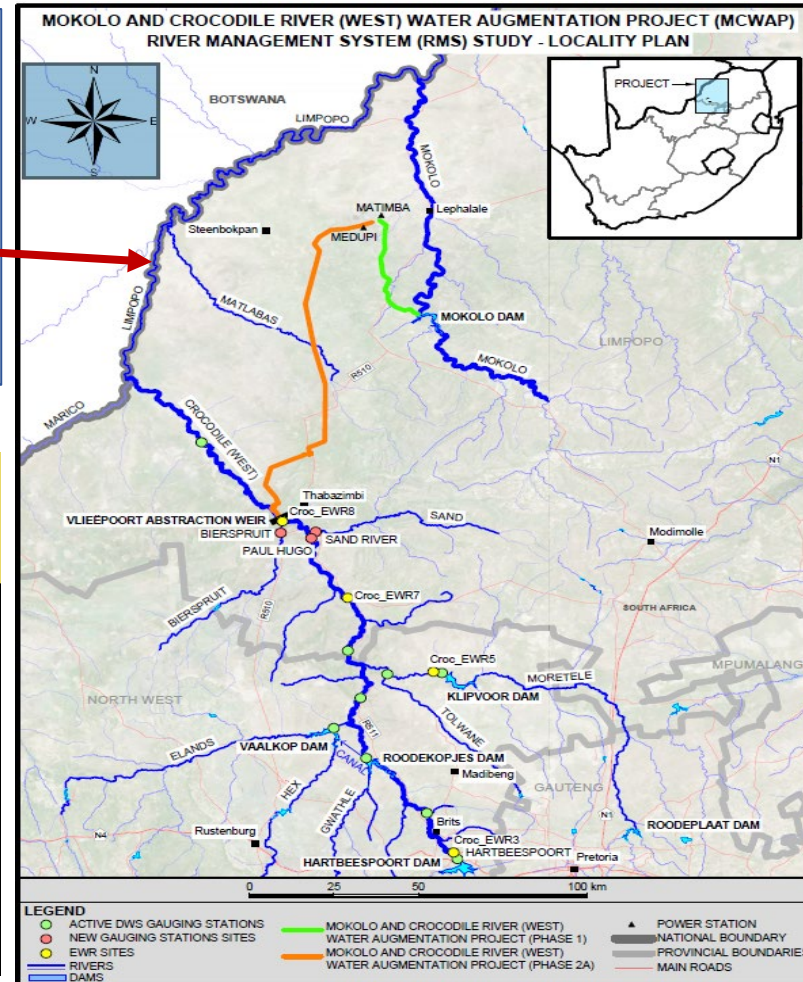
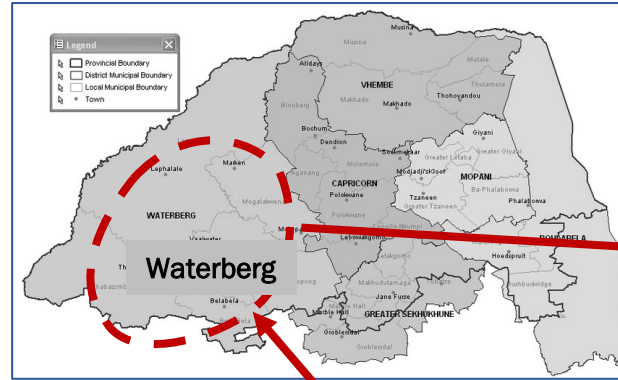


4. Project Background & Location

Major developments in the Waterberg Coalfield located in the Lephalale area, coupled with the limited availability of water in the area prompted the Mokolo Crocodile Water Augmentation Project (MCWAP):

- MCWAP Phase 1 comprised of the construction of a pump station at Mokolo Dam and 43 km of new pipeline to Lephalale, supplying various end users. Phase 1 is operational.
- MCWAP Phase 2 is the subject of this Request for Bids. For this project phase scope, specifications, site data, conditions of tender, conditions of contract, and all other Client requirements, refer to three CIDB based RFB Volumes with reference to Tender number as provided in the cover page of this Presentation.
- We will take you through the RFB outline focusing on some of the key aspects of this RFB as to provide some guidance to prospective bidders.
- You are encouraged to duly peruse all Volumes as provided and to submit a comprehensive and responsive bids.

4.1 Project Site Location



With reference to the abstraction Works Location in Thabazimbi:

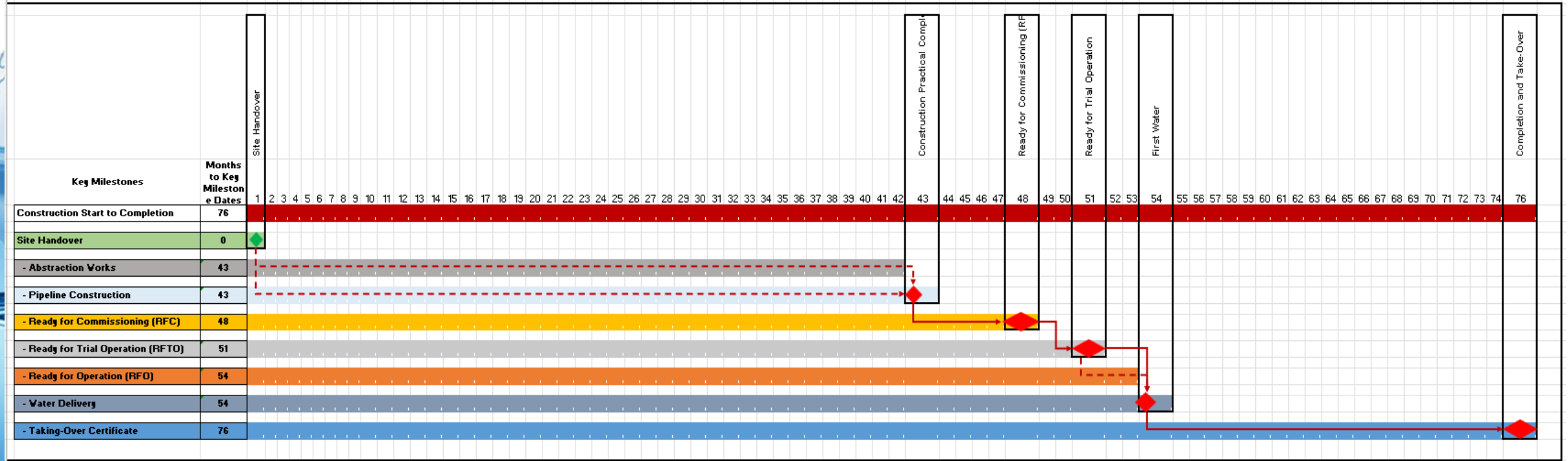
- +/- 300 km from Polokwane
- +/- 250 km from JHB

Total project site footprint of about 300 km from the Hartbeespoort Dam, Vlieëpoort abstraction weir at Thabazimbi to the terminal point at Lephalale under Waterberg District.

5.1 Project Estimated Timelines to Completion

Key Milestones	Duration after Site Handover to key Milestone in months
Total Construction Duration to Takeover Certificate	76 months
▪ Ready for Commissioning (RFC)	48 months
▪ Ready for Trial Operation (RFTO)	51 months
▪ Ready for Operation (RFO)	54 months
▪ Water Delivery	54 months
▪ Taking-Over Certificate	76 months

5.2 Construction Milestones

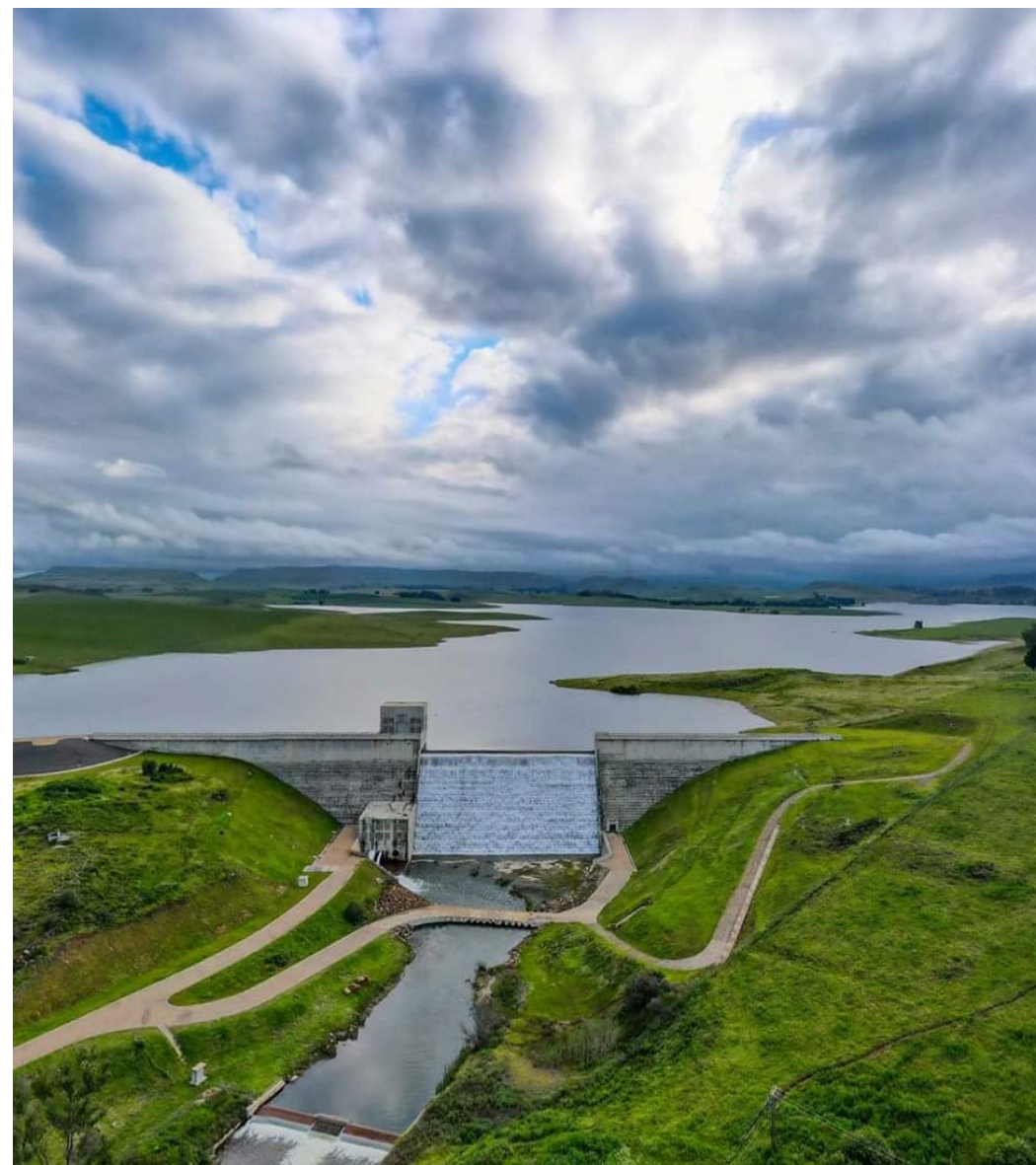




MOKOLO CROCODILE WATER AUGMENTATION PROJECT PHASE 2

Tender no: 054/2024/PMID/MCWAP2/RFB

6. GENERAL BID REQUIREMENTS





6.1 Bid Requirements: General

COMMUNICATION:

All clarifications must be sent to tenders01@tcta.co.za

CLARIFICATIONS DEADLINE: 26 June 2024 at 16:00 PM (SAST)

CLOSING DATE AND TIME: 10 July 2024 at 14:00 PM (SAST)

BID VALIDITY PERIOD:

84 Calendar days

PREPARATION OF BID SUBMISSIONS: Refer to Volume 1: Tendering Procedures, section C.2.13.

6.2 Tender Standards & Documents

Tender 054/2024/PMID/MCWAP2/RFB is issued in compliance to CIDB Standard for Uniformity 2019 (SFU).

Volume 1	Volume 2	Volume 3:
Tendering Procedures	Returnable Documents	Contract
T1.1 Tender Notice and Invitation to Tender	T2.1 List of Returnable Documents	Part C1: Agreement and Contract Data
T1.2 Tender Data	C1.1 Form of Offer and Acceptance	Part C2: Pricing Data
	C1.2 Contract Data (Part 2: Data provided by the Contractor)	Part C3: Scope of Work
	C2.2 Bill of Quantities	Part C4: Site Information
	T2.2 Returnable Schedules	




6.3 Submission Packaging

Functional Offer (Envelope 1)

- Submit one (1) original set of Tender documents (as defined in C.1.2) duly completed and signed as relevant to Envelope 1, i.e. forms and returnable Documents in Volumes 1 and 2;
- Four (4) photocopies and a digital copy on a USB-DISK shall be submitted together with a covering letter and supporting documents in a sealed package endorsed with the tender identification details.

Financial Offer (Envelope 2)

- Submit one (1) original and two (2) photocopies of the Financial Offer
- One (1) USB-DISK containing the digital priced Bill of Quantities (Microsoft Excel format) in Volume 2 together with a covering letter and supporting documents in a sealed package endorsed with the tender identification details.



MOKOLO CROCODILE WATER AUGMENTATION PROJECT PHASE 2

Tender no: 054/2024/PMID/MCWAP2/RFB

PROJECT SCOPE: 7.1 Technical C3.1 Specification Part C4 Site Data





7.1.1 Major Infrastructure Components

- Vlieëpoort Abstraction Works
- Low Lift Pumping Station & Low Lift Rising Main
- High Lift Pumping Station & High Lift Rising Main
- Electrical Power Supply
- Break Pressure Reservoir
- Gravity Main
- Matlabas River Crossing
- Balancing Dams



7.1.2 Major Infrastructure Components (continuation)

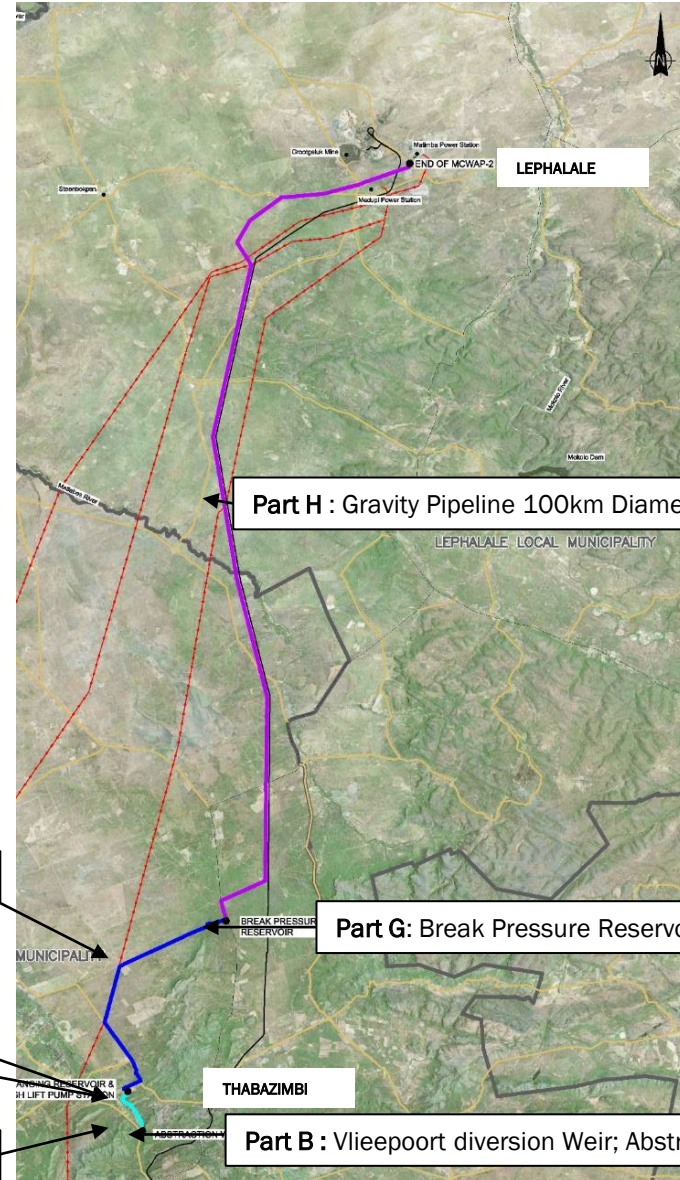
- Points of Supply / Off-takes
- Ancillary Infrastructure (Operation and Control Centre, Facilities & Houses)
- Cathodic Protection and AC Mitigation
- SCADA
- Instrumentation
- Communication
- Access Control and Security

7.1.3 Major Infrastructure Components (continuation)



Pipelines:

- Part F :** High-Lift Rising Main Pipeline 27km Diameter 1,4m
- Part E :** High-Lift Pumping Station
- Part D :** Balancing Reservoir and Sedimentation Works
- Part C :** Low-Lift Rising Main Pipeline 5,3km Diameter 1,0m (two parallel pipelines)



Part H : Gravity Pipeline 100km Diameter range 0,9m to 1,6m

Part G: Break Pressure Reservoir

Part B : Vlieepoort diversion Weir; Abstraction Works and Low-Lift Pumping Station



7.1.4 Project Scope of Work - Investigations / Studies Undertaken

- Topographical Survey
- Corrosion Survey
- Geotechnical Surveys
- Geohydrological Studies
- Flood Hydrology and River Hydraulics.
- Water Quality
- Environmental Studies
- Social Studies
- Sediment Transport Study



7.1.5 Project Scope of Work -Designs

Employer's Designs – FIDIC Red Book

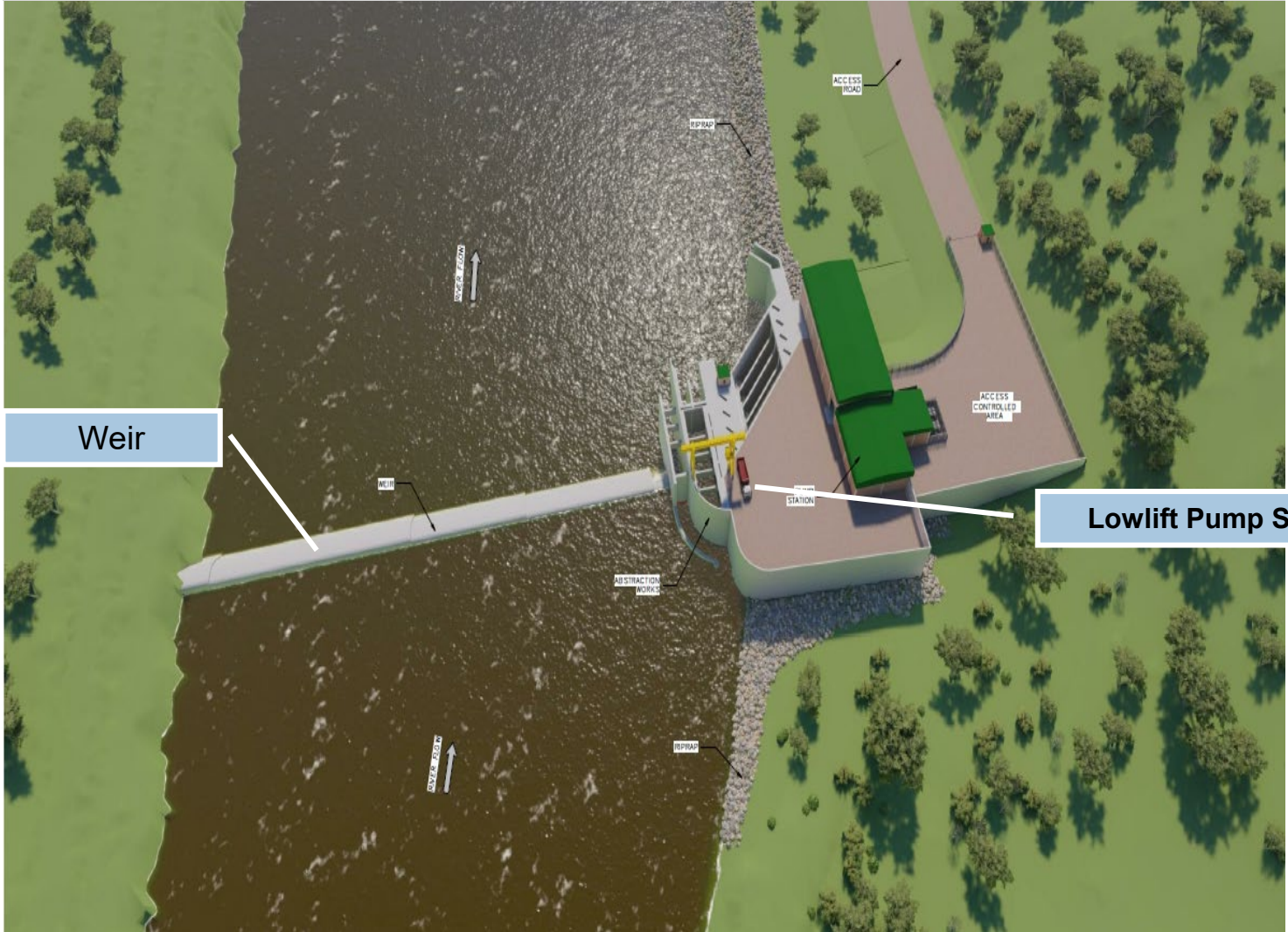
and

Contractor's Designs – FIDIC Yellow Book

- Mechanical; pumps and ancillary plant
- Mechanical plant
- Mechanical; heating, ventilation, air conditioning, HVAC
- Fire protection and suppression
- Electrical.
- Control and Instrumentation, communication and security
- Temporary Works during Construction

7.1.6 Project Scope of Work -Designs

Vlieëpoort Weir and Abstraction Works



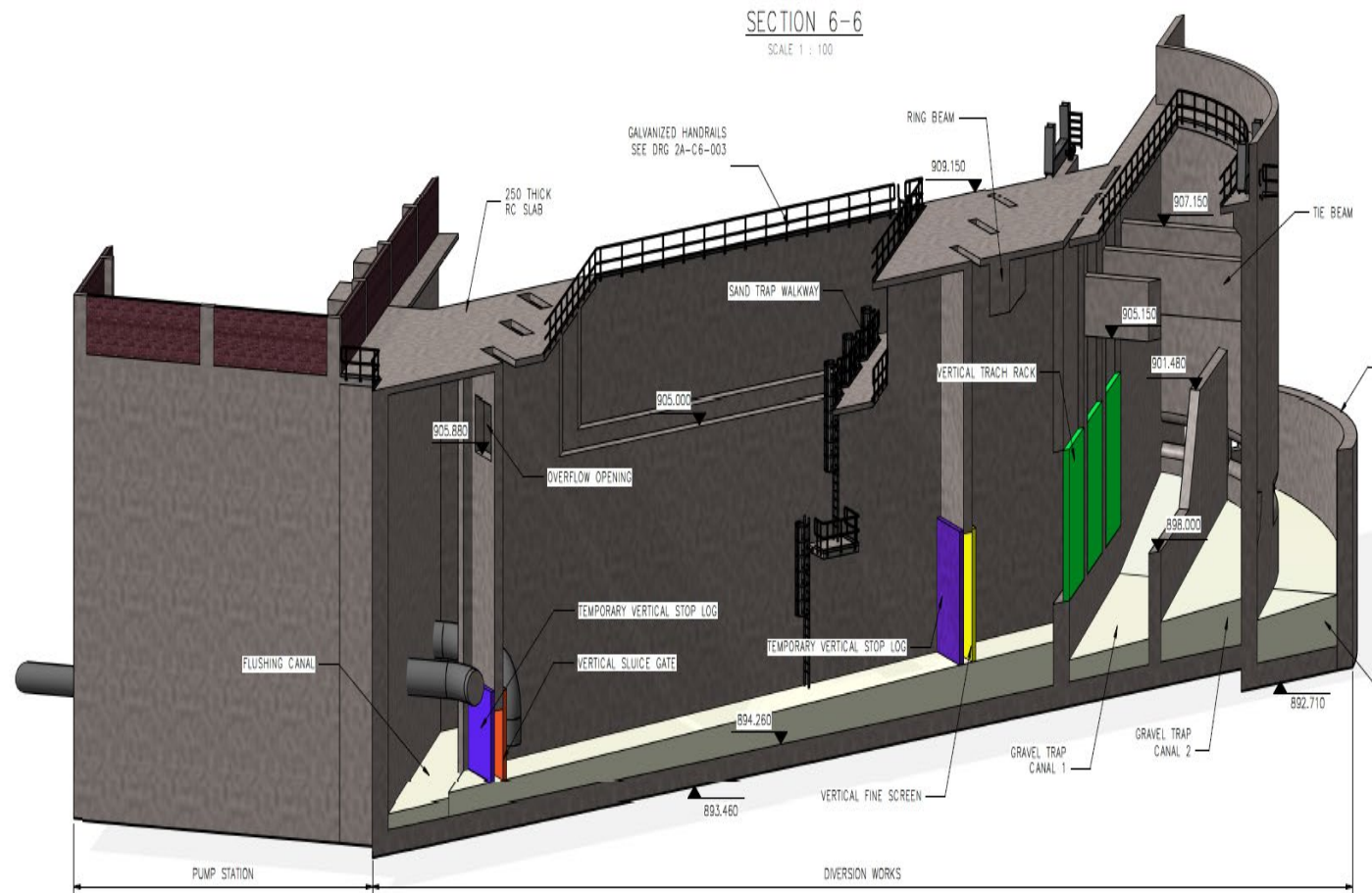
Weir

Lowlift Pump Station



7.1.7 Part B: Abstraction Works

Vlieëpoort Weir and Abstraction Works



Design Capacity

- The abstraction works capacity is 125 million m³/a

Founding Level & Foundation:

- Founding level range from 20 to 30m deep, due to very deep alluvium and cobbles above the bedrock
- Proposed foundation type: Jet Grouting is proposed

7.1.8 Part B: Low Lift Pump Stations

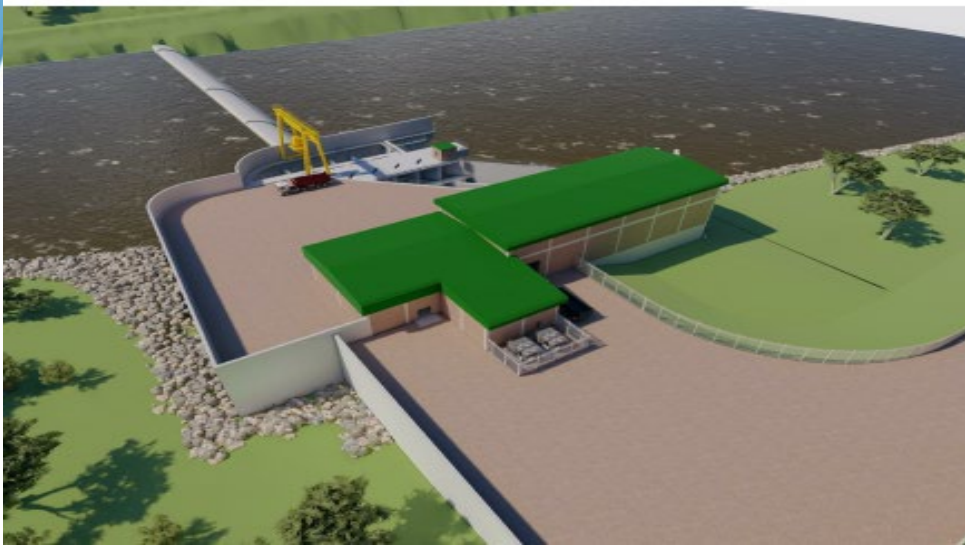
Low Lift Pump Station



SITE 3D VIEW 1



SITE 3D VIEW 2



Duty Points: $3.3\text{m}^3/\text{s}$ @ 47m

Pumping Stations to be equipped with Variable Speed Drives

MOKOLO CROCODILE WATER AUGMENTATION PROJECT PHASE 2

Tender no:
054/2024/PMID/MCWAP2/RFB

PROJECT SCOPE: 7.2 Environmental **C3.1 Specification – C314**



7.2.1 Environmental Considerations

- Initial EA: 18 March 2019
- Final EA: 29 September 2022
- Approved CEMPr
- DMRE approval for all borrow pits
- Spoil to be used to rehabilitate ownerless & derelict borrow pits
- Preconstruction activities – permits for relocation of trees
- Environmental Specification
- Environmental Method Statements
- Environmental Officer & supporting team requirements



Environmental Authorisation

In terms of Regulation 25 of the Environmental Impact Assessment Regulations, 2014, as amended

The authorised Mokolo Crocodile River (West) Water Augmentation Project Phase 2A (MCWAP-2), and the associated construction of telecommunication structures and project deviations in the

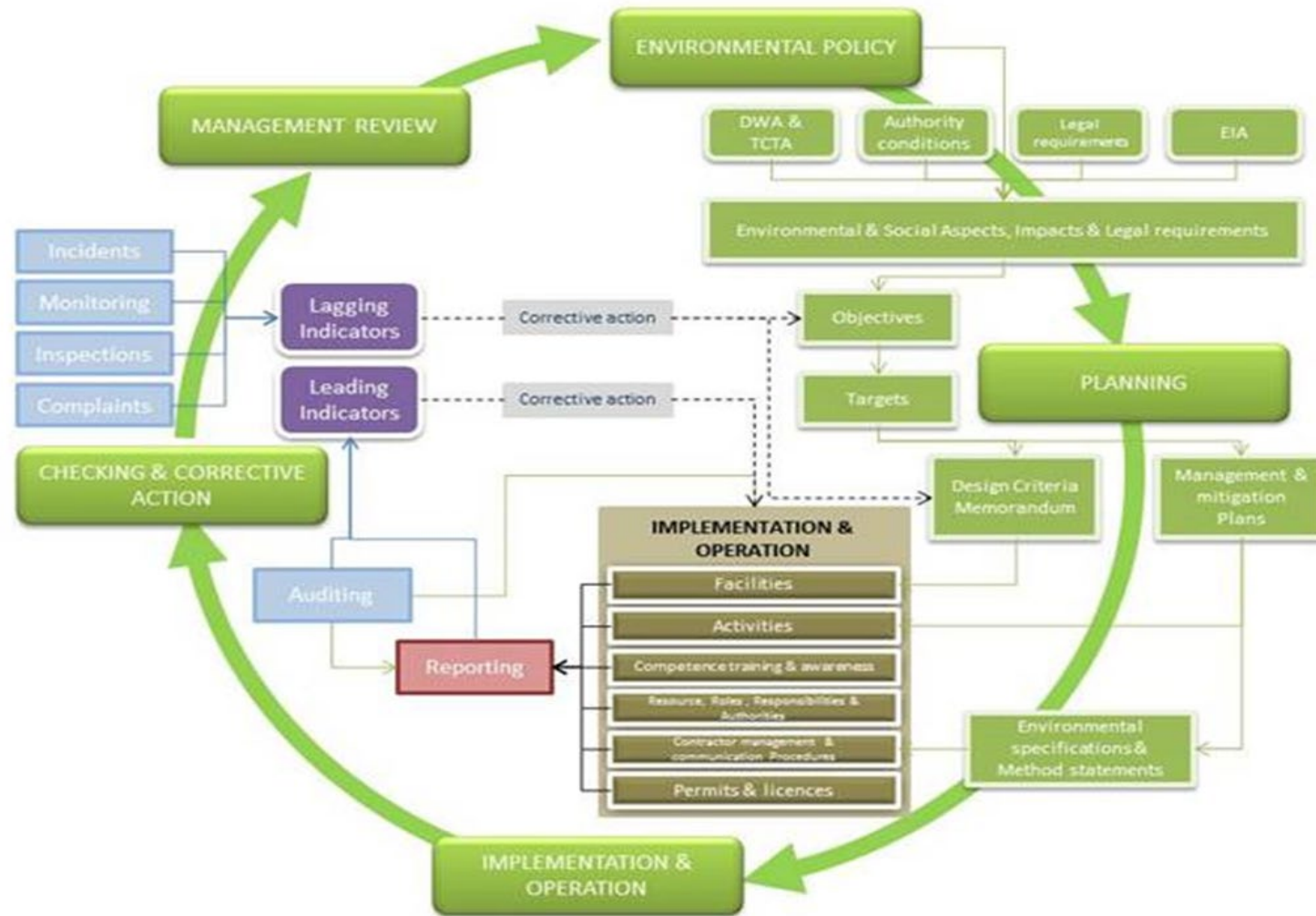
Limpopo Province

Waterberg District Municipality

Authorisation register number:	14/12/16/3/3/1/1100 <i>(Inclusive of activities applied for under application with DFFE Reference No: 14/12/16/3/3/1/2481)</i>
Last amended:	<i>Second Issue (First issue on 13 October 2020)</i>
Holder of authorisation:	<i>Department of Water and Sanitation</i>
Location of activity:	<i>Limpopo Province: within Wards 1 and 9 in Thabazimbi Local Municipality Wards 1, 2, and 3 Lephalele Local Municipality</i>

This authorisation does not negate the holder of the authorisation's responsibility to comply with any other statutory requirements that may be applicable to the undertaking of the activity.

7.2.2 Environmental & Social Management Philosophy

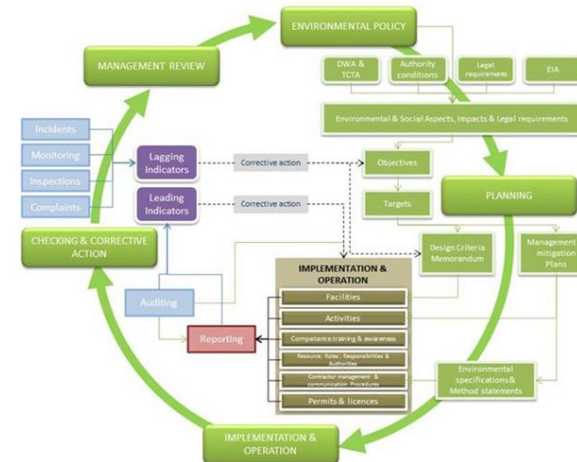




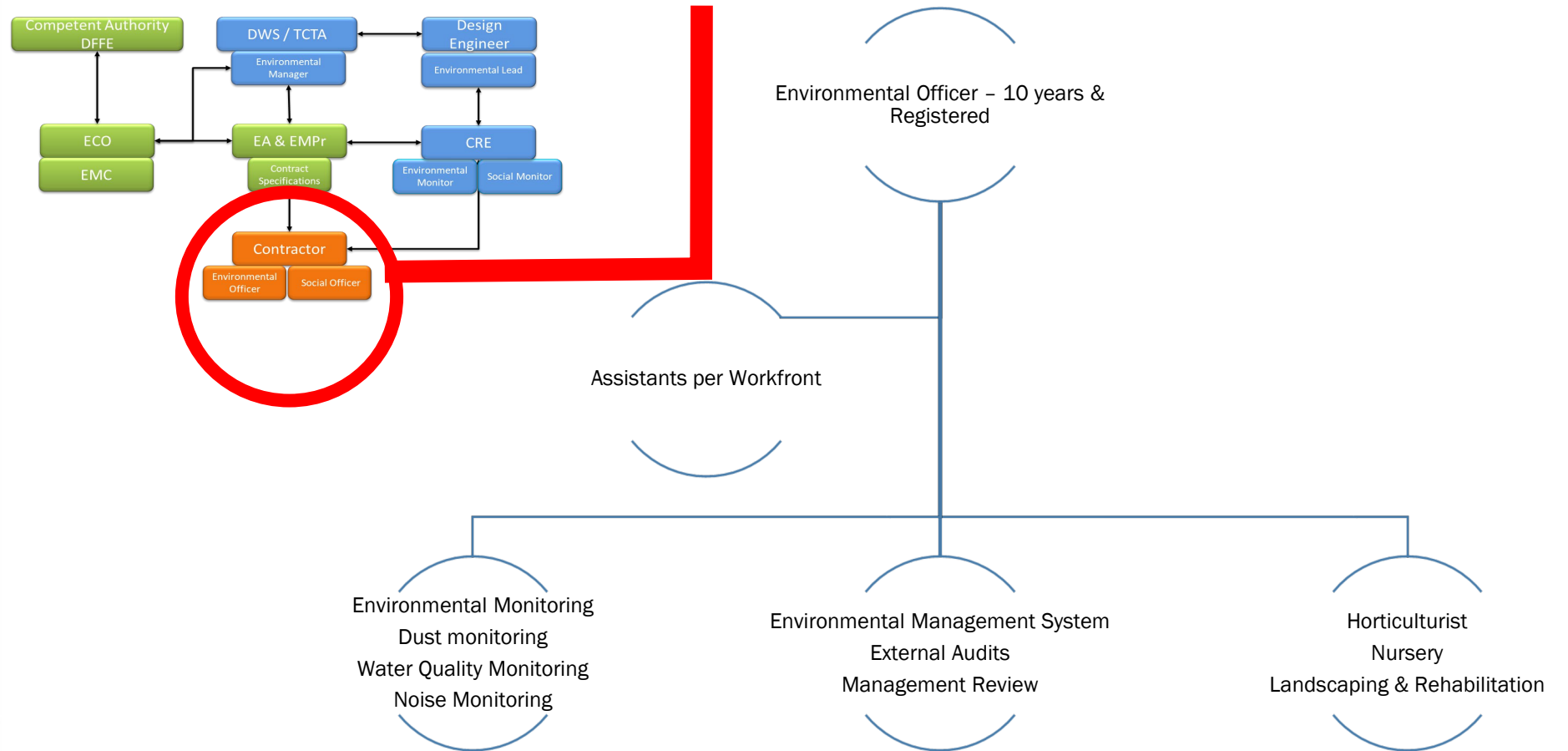
7.2.3 Monitoring & Reporting Requirements

- Monitoring (Lagging) for project consists of:
 - Dust Monitoring
 - PM 10 Monitoring
 - Noise Monitoring
 - Water Quality Monitoring and Biomonitoring
 - Ground Water Monitoring
 - Daily, weekly and monthly reporting
 - Inspection and monitoring reporting
 - Management Review

- Monitoring (Leading) for project consists of:
 - Incidents
 - Near Misses
 - Inspections
 - Auditing
 - Daily, weekly and monthly reporting
 - External and internal auditing and reporting
 - Method statements
 - Management Review



7.2.4 Environmental & Social Roles & Responsibilities



7.2.5 Construction Environmental Management Plan Structure

Aspect (ie noise)

- # Identify Risks and Impacts
- # Defined Risk Objectives
- # Required Performance Indicators and Target
- # Mitigation Measures

Monitoring

- # Monitoring Methods
- # Monitoring Frequency
- # Applicable Standards

Implementation

- # Time Period
- # Responsibility
- # Compliance Monitoring



7.2.6 Project Scope of Work– Environmental: Pre-construction activities

Walkabout of the alignment with all disciplines with Landowners and Contractor

Preconstruction

Fauna and Flora search and rescue - a nursery

Preconstruction



Application for relaxation for blasting within 500m of any structures – Explosives Act

Preconstruction

Heritage and Paleontology Activities

Preconstruction and Construction



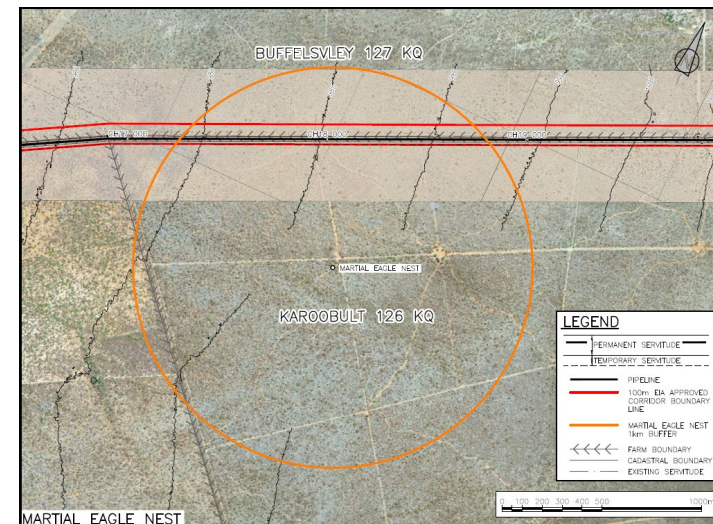
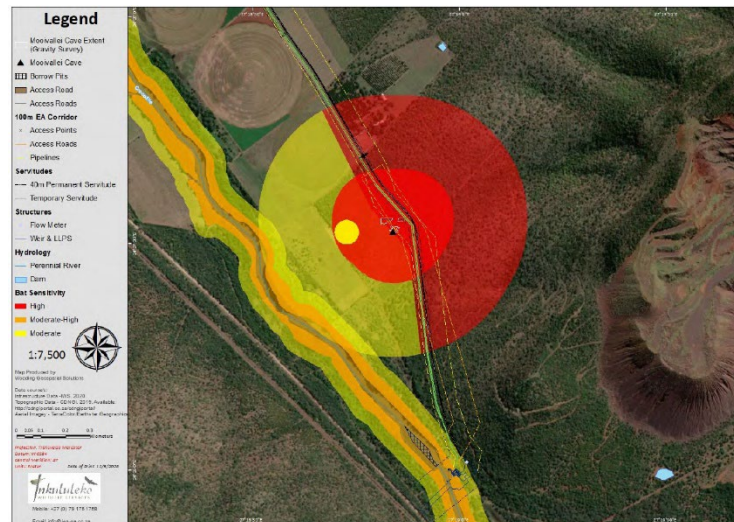
7.2.7 Landscaping & Rehabilitation

Restoration and rehabilitation of affected environment:

- Specification i.t.o. exposed pipe is to be strictly adhered to – Construction Train
- Pipeline servitude – permanent and temporary
- Topsoil & Fertile soil stockpiles
- Trench material - spoiling
- Determine fertility of soil
- Replacement of fertile soil – required compaction
- Reinstatement topsoil according specification requirement
- Penalties for noncompliance with Environmental and Social Requirements

7.2.8 Specific Sensitive Environments

- Bat Cave
 - ✓ Restriction on blasting, construction at night and artificial lighting – 500m from the boundary of the Bat Cave
 - ✓ A 200m buffer to the west and 500m to the east from the boundary of the Bat Cave to be maintained during construction activities
 - ✓ A 50m buffer from Bat Roosting Areas
- Martial Eagle Nest – no construction during breeding season





MOKOLO CROCODILE WATER AUGMENTATION PROJECT PHASE 2

Tender no: 054/2024/PMID/MCWAP2/RFB

PROJECT SCOPE: 7.3 Social C3.1 Specification – C313 & C3150





7.3.1 Social Landscape

- Project is situated in Waterberg District Municipality and transects two (2) local municipalities, mainly:
 - Thabazimbi Local Municipality
 - Lephalale Local Municipality
- High unemployment rate within the project area and benefits expectations from the project by the locals
- Optimal localisation is required in terms of local employment, job opportunities and preferential procurement where possible, to mitigate/minimise project social risks



7.3.2 Social Specifications

Social management documents in place include the following:

- Project Social Management Framework
- Stakeholder Relations and Management Plan
- Socio-Economic Baseline (SED) Studies Report
- Integrated Socio-Economic Management Framework
- Asset and Infrastructure Survey Report
- Social Management Strategy
- Stakeholders and Social Communication Strategy
- Social Management Specifications



7.3.3 Social Considerations

- Access protocol – to manage access to properties where there is expensive game
- Social specification – on which method statements will be based
- Social baseline – describes existing social conditions and provides recommendations
- Social management plan – forms part of CEMPr
- Social policy, plans and strategy – guiding principles for social management on the project
- Stakeholder engagement – coordinated effort by multiple organisations
- Awareness to staff on social management is required
- Limit project social risks and impacts by implementing social mitigation measures and management
- Maximise stakeholders' engagement and management
- Implement the project in a social manner and adhere to best practices and international standards
- Key social resources allocation is essential
- Targets and penalties are applicable in this contract



MOKOLO CROCODILE WATER AUGMENTATION PROJECT PHASE 2

Tender no: 054/2024/PMID/MCWAP2/RFB

PROJECT SCOPE: 7.4 Health & Safety C3.1 Specification – C312






7.4.1 Health and Safety Considerations

Part C3.1 Section 2 Occupational Health and Safety

- Specific focus on:
 - Training and competency requirements
 - CHS Manager
 - Piling and Grout hammer operations
 - Working in close proximity to powerlines
 - Heat stress
 - Incident classification and Incident management
 - Emergency evacuation
 - Borrow pits and Quarries requirements
 - HBA/COVID-19 Requirements (Policies, Risk assessment, prevention and control plan)
 - Sufficient resources is provisioned for OHS compliance
 - OHS budget is available

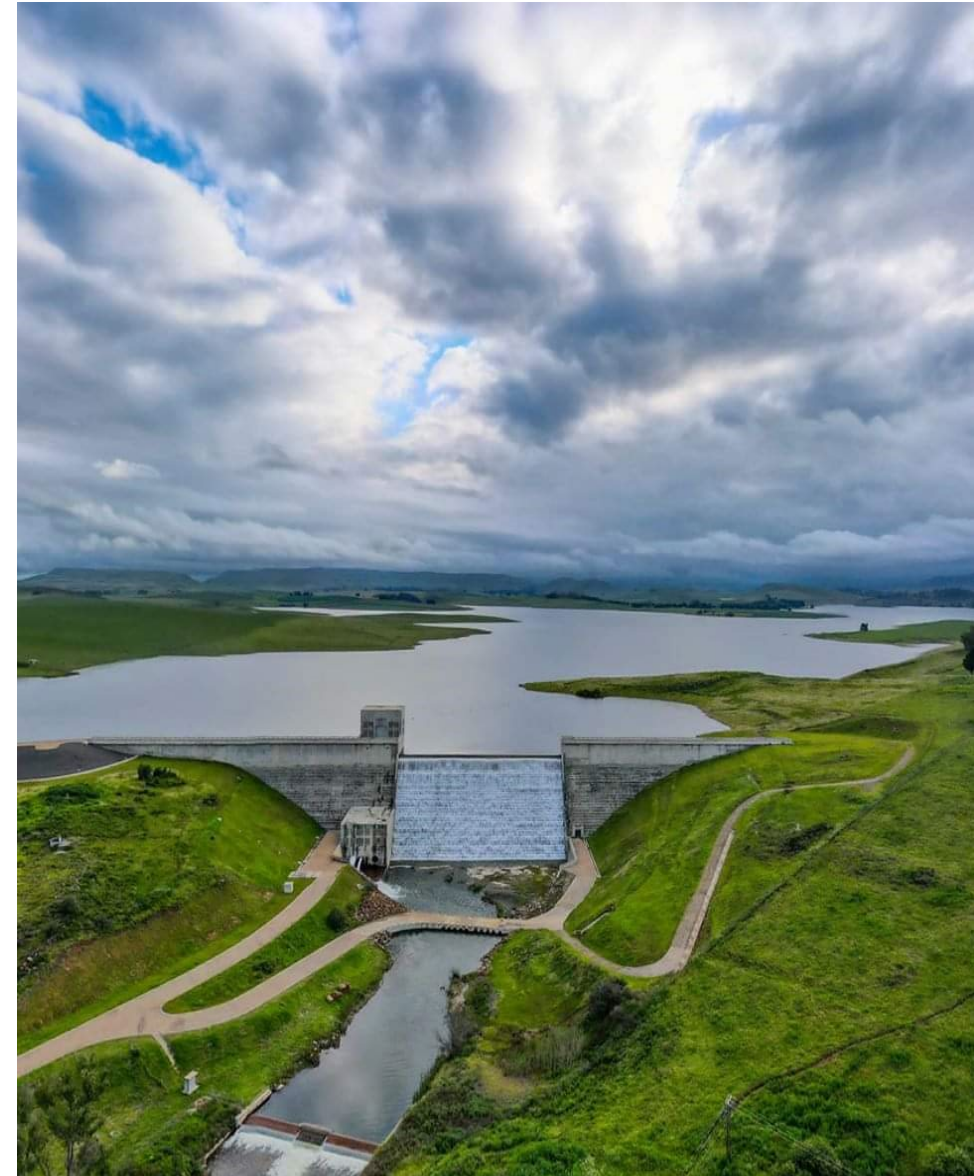


MOKOLO CROCODILE WATER AUGMENTATION PROJECT PHASE 2

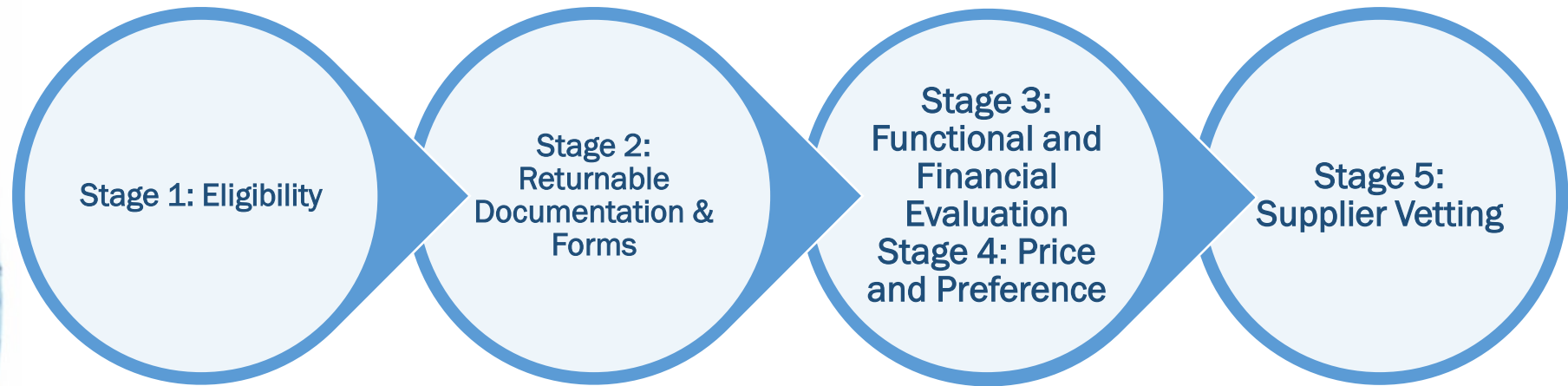
Tender no: 054/2024/PMID/MCWAP2/RFB

8. BID EVALUATION

Volume 1 Tendering Procedures



8.1 Bid Evaluation Process



- 9CE class of construction work
- Tender Security of 1% of the tendered price
- Contract Skills Development Goal (CSDG)
- Standard for developing skills through infrastructure contracts
- Compulsory Briefing attendance

- Any Tenderer who fails to submit a non-mandatory returnable document will receive zero points where that document is linked to specific evaluation criteria
- Any Tenderer who fails to submit a mandatory document will be disqualified and not evaluated further

- Tenderers must achieve a minimum of 222 points of Functionality to qualify for Stage 4
- Price – 90/10
- Preference – B-BBEE Level

- Fraud and Corrupt activities
- Blacklisting
- Tax Compliance
- Non-government employee

MOKOLO CROCODILE WATER AUGMENTATION PROJECT PHASE 2

Tender no: 054/2024/PMID/MCWAP2/RFB

9. FUNCTIONALITY

Volume 1 Tendering Procedures

T2.1 List of Returnable Documents

T2.2 Returnable Schedules



9.1 Functionality – Pipeline



Pipeline Construction-Related Experience (Refer to Vol 2 Section T2.2.1 Page E)		Maximum Points
<p>Pipeline Construction Related Experience</p> <ul style="list-style-type: none"> • Successfully procured and constructed a minimum of one reference projects of a buried welded steel pipeline with ≥ 800 mm and not less than 20km length in the past twenty (20) years. • Provide details of five completed reference projects for maximum points. • Client reference letters must be attached. (not to be evaluated, but submitted as a returnable) • Managed subcontractors and suppliers – Key competencies of the scope of work 	<p>Only projects of pipelines within the range ≥ 800 mm Nominal Diameter (ND) and of 20 km and above will be evaluated. Projects of pipeline diameter < 800 mm ND and of less than 20 km of pipeline will not be allocated points.</p> <p>No. of Project Points</p> <p>- 10 points for each buried welded steel pipeline project of ≥ 800 mm ND to a maximum of 50 points</p> <p>1 project of ≥ 800 mm of at least 20km 10 points 2 projects of ≥ 800 mm of at least 20km 20 points 3 projects of ≥ 800 mm of at least 20km 30 points 4 projects of ≥ 800 mm of at least 20km 40 points 5 projects of ≥ 800 mm of at least 20km 50 points</p> <p>KM Points</p> <p>- 10 points for additional length of 20 km to a maximum of 50 points</p> <p>- 20km-39km 10 points - 40km-59km 20 points - 60km-79km 30 points - 80km-99km 40 points - 100km and above 50 points</p>	100

9.2 Functionality – Other Experience



Mechanical, Electrical and Instrumentation (Refer to Vol 2 Section T2.2.1 Pages F1 to F5)	Maximum Points	
<p>Mechanical, Electrical and Instrumentation</p> <ul style="list-style-type: none"> • List two successfully completed projects with Jet Grouting minimum of 10 meters in depth, that involved variable saturated soil conditions (Page F1). • List two successfully completed construction projects with reinforced mass concrete bulk water Abstraction Civil works including river diversion infrastructure with > 2000 m3 reinforced concrete – (Page F2). • List three pumps design supply and installations projects > 1m3/s and > 100 m head (Page F3). • List three successfully completed variable speed drives > 2MVA design, supply, and installation projects (Page F4). • List two successfully completed with telemetry system installation project of 5 square kilometres and with multiple Remote Terminal Unit (RTU) and SCADA (Page F5) 	<p>Maximum of 5 Points per project reference which satisfy required relevant experience reference. Two reference project each element:</p> <ul style="list-style-type: none"> - Jet Grouting: (2 qualifying projects = 10 points), (1 qualifying Project = 5 points), (No qualifying projects = 0 points). [Max. points 10] - Reinforced Concrete: - (2 qualifying projects = 10 points), (1 Qualifying Project = 5 points), (No qualifying projects = 0 points). [Max. Points 10] - Pump Stations Design, Supply and Installations projects: - (3 qualifying projects = 15 points), (2 qualifying Project = 10 points), (1 qualifying Project = 5 points) (no qualifying project = 0 points). [Max. points 15] - Variable Speed Drives Design, Supply and Installations projects: - (3 qualifying projects = 15 points), (2 qualifying Project = 10 points), (1 qualifying Project = 5 points) (no qualifying project = 0 points). [Max. points 15] - Telemetry System Installation projects: - (2 qualifying projects = 10 points), (1 qualifying Project = 5 points), (No qualifying projects = 0 points). [Max. Points 10] 	60



9.3 Functionality – Resources Returnables

Bidders must submit **required CV's in a prescribed format** and include the organisational structure indicating the deployment of key and additional resources required to meet the tender requirements.

Bidders must also submit the team structure indicating **resource deployment for the work fronts**, work areas and key disciplines resources deployment in consideration of the project requirements and specifications as listed in **Volume 1**, and key disciplines' resources.

9.4 Functionality – Resources Requirements

Key Personnel	Technical requirement
Construction Manager	<ul style="list-style-type: none"> • 10 points for 15 years experience • 2 points for every one year above 15 years to a maximum of 10 points. • 0 points for less than 3 years, 1 point for over 3 - 4 years and 2 points for at least 5 years in Construction FIDIC Experience. • Must Meet Qualification or Professional registration with either ECSA or SACPCMP or equivalent
Site Agent 1 - River Abstraction/Dam Works	<ul style="list-style-type: none"> • 6 points for 10 years • 2 point for every one year above 10 years to a maximum of 6 points. • 1 point for Qualification • 1 point for Professional registration with either ECSA or SACPCMP or equivalent
Site Agent 2 – Pipeline	<ul style="list-style-type: none"> • 6 points for 10 years • 2 points for every one year above 10 years to a maximum of 8 points. • 1 point for Qualification • 1 point for Professional registration with either ECSA or SACPCMP or equivalent
Site Agent 3 - Pump Stations	<ul style="list-style-type: none"> • 6 points for 10 years • 1 point for every one year above 10 years to a maximum of 4 points. • 1 point for Qualification • 1 point for Professional registration with either ECSA or SACPCMP or equivalent
Site Agent 4 – Structures	<ul style="list-style-type: none"> • 6 points for 10 years • 2 point for every one year above 10 years to a maximum of 6 points. • 1 point for Qualification • 1 point for Professional registration with either ECSA or SACPCMP or equivalent
Integration Manager	<ul style="list-style-type: none"> • 6 points for 10 years • 2 point for every two year above 10 years to a maximum of 6 points. • Qualification Must Meet Requirements. A relevant degree, diploma or equivalent to NQF level 6
Environmental Officer	<ul style="list-style-type: none"> • 5 points for 10 years • 1 point for every two years above 10 years to a maximum of 3 points. • Must Meet Requirements - Qualification or Professional registration with either SACNASP and/or EAPASA
Health and Safety Manager	<ul style="list-style-type: none"> • 5 points for 10 years • 1 point for every one year above 10 years to a maximum of 3 points. • Must Meet Requirements - Qualification or Professional registration with either SACPCMP
Social Officer	<ul style="list-style-type: none"> • 5 points for 10 years • 1 point for every two years above 10 years to a maximum of 3 points. • Must Meet Requirements - A degree in Social Sciences, Public Relations, Development Studies, Communication, archaeology, anthropology, related Qualification

9.5 Functionality – Construction Plans

Construction Management Plan shall comply with the **project specifications and contractual requirements.**

Construction Plan Category	Evaluation Method
CMP V1: Pipeline Construction Management Plan	Responsive - Submitted = 1 Not responsive - Not submitted = 0
CMP V2: Temporary Works for Abstraction Works – Construction Management Plan	
CMP V3: Abstraction Works, Excavations and Preparation at the Diversion Weir, Diversion Works and Low Lift Pumping Station Construction Management Plan	
CMP V4: Project Integration Management Plan	
CMP V5: Occupational Health, Safety and Security Construction Management Plan	





9.6 Financial Capacity

- Audited Annual Financial Statements for the past 5 years signed off by a qualified financial auditor.
- Projected revenue for the next two years.
- Statement from Tenderer's Bank(s) of credit facilities currently in place; and Letter from a registered RSA financial institution acceptable to TCTA confirming they would provide a 10% of the accepted contract amount as Performance Security – Demand Guarantee to the Tenderer.

9.7 Price and Preference

- It is compulsory for all Tenderers to **price all items in Option 1 of the Bill of Quantities**. Some items in the Bill of Quantities require the main and **the alternative option to be priced by the Tenderer**. Bidders are referred to the pricing instructions in Volume 3 C2.1.
- The Preference system for this RFB is **90/10**. Preference points awarded will be according to a Specific Goals and Promotion of Redistribution and Development Programme

B-BBEE Status Level of Contributor	Number of Points
1	10
2	9
3	6
4	5
5	4
6	3
7	2
8	1
Non-compliant Contributor	0

MOKOLO CROCODILE WATER AUGMENTATION PROJECT PHASE 2

Tender no: 054/2024/PMID/MCWAP2/RFB

10. SITE VISIT





10.1 Site Visit

- **Date:** 27 February 2024 at 10:00
- **Meeting point:** Site coordinates will be shared on the email addresses provided, 10 days before the visit.
- **Requirements:** Where possible companies should arrange group travel by one car with not more than 3 people per company.
- **Send the names and contact detail of people that will be attending a site visit to:** tenders01@tcta.co.za

REMINDER

COMMUNICATION:

All clarifications must be sent to
tenders01@tcta.co.za

CLARIFICATIONS DEADLINE:

26 June 2024 at 16:00 PM (SAST)

CLOSING DATE AND TIME:

10 July 2024 at 14:00 PM (SAST)

BID VALIDITY PERIOD:

84 Calendar days

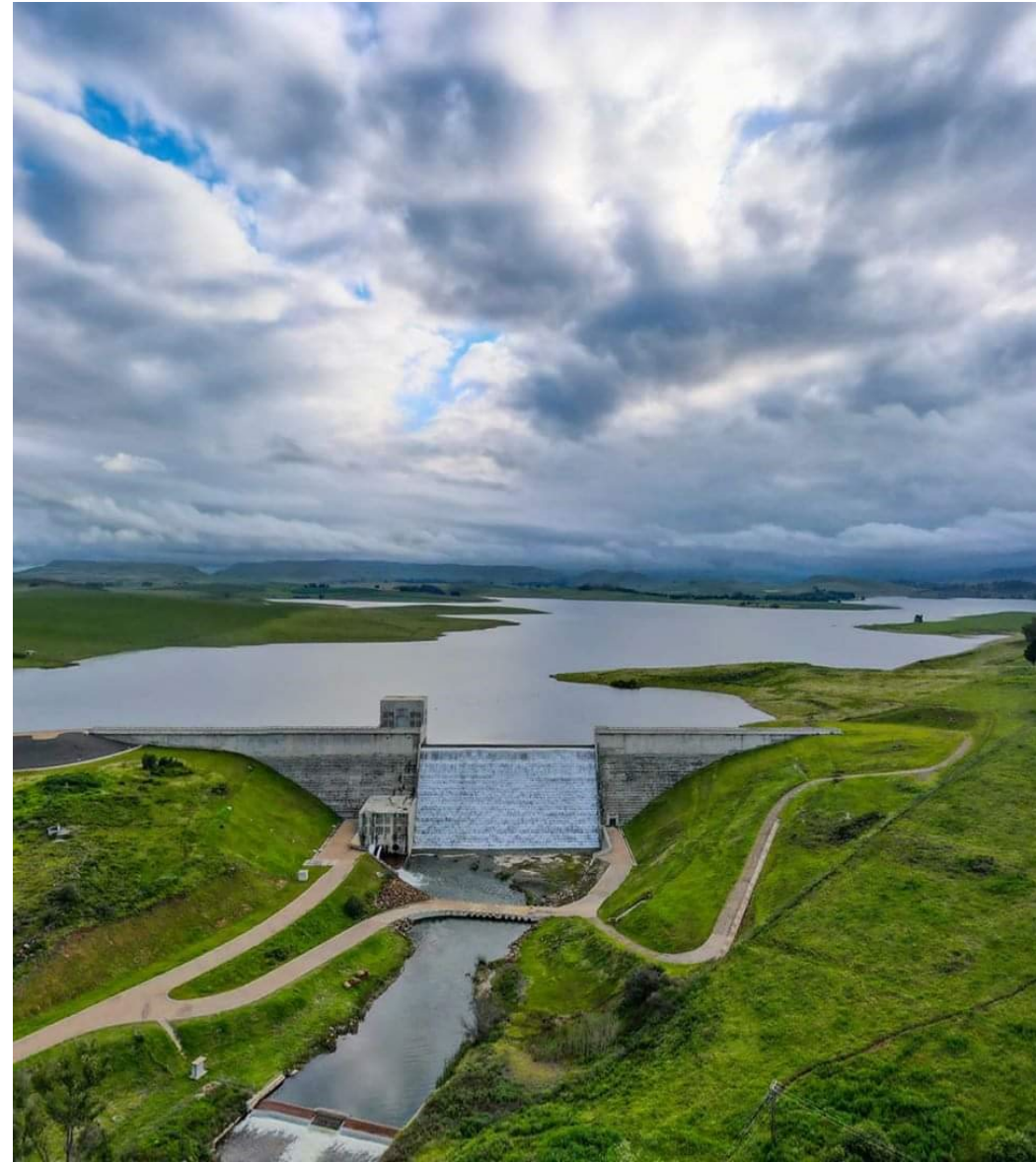
ATTENDANCE REGISTER:

Kindly provide the following in the chat box OR complete the attendance register:

- Name & Surname
- Company Name
- Email address
- Contact number



11. Q & A session



Thanking You



Contact Person:

Godfrey Mnisi

Project Procurement Specialist

Email: tenders01@tcta.co.za

Contact number: (012) 683 1200